

Neo-Dyn® Series 184P Vacuum Switch

Sensitive, compact, factory set/tamper proof vacuum switch. Has efficient Nega-Rate® Belleville disc spring sensing mechanism.

Operating Pressure Data

Fixed Set Point Range		Maximum Recommended System Pressure	Proof Pressure
Increasing	Decreasing		
9" H ₂ O to 60" H ₂ O	5" H ₂ O to 55" H ₂ O	100	150

All values given in psig.

Standard Specifications

Deadband (Differential)

The deadband can be selected anywhere from 4" H₂O or 8% (whichever is greater) to 45% of the set point.

Electrical

Snap action electrical switch listed by Underwriters' Laboratories, Inc., Factory Mutual and CSA

Electrical Connection

½" - 14 NPT male conduit connection with PVC insulated 18 AWG leads 18" long

Pressure Connection

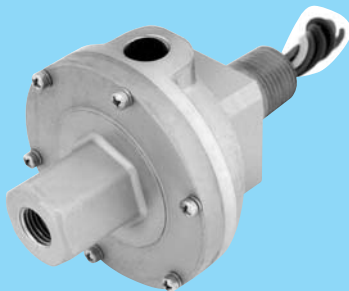
¼" - 18 NPT Female

Temperature Range

Ambient: -30°F to +160°F
(-34°C to +71°C)
Media: -30°F to +160°F
(-34°C to +71°C)

Shipping Weight

Approximately 20 ounces



**Explosion Proof
Hermetically Sealed
(NEMA 7 and 9)**

Ordering Sequence — Select desired option for each category

OPTIONS

Wetted Material

1 Aluminum and stainless steel, Teflon coated polyimide diaphragm, Buna-N O-Ring

Electrical Form

C 11 amps and ¼ hp 125 or 250 VAC; 5 amps resistive, 3 amps inductive 28 VDC; .5 amps resistive 125 VDC
CC 11 amps and ¼ hp 125 or 250 VAC; 5 amps resistive, 3 amps inductive 28 VDC; .5 amps resistive 125 VDC

Enclosure

6 Explosion proof • factory sealed • hermetically sealed electrical assembly P/N 057-0030 (C Form); P/N 057-0057 (CC Form). **Underwriters' Laboratories, Inc.** listed (file #E56677) or **Canadian Standards Association** certified (file #34146) for Division 1 and 2; Class I, Groups A, B, C and D; Class II, Groups E, F and G hazardous locations (NEMA 7 and 9)

Miscellaneous

A Epoxy paint exterior — extra protection for severe environments
B Viton O-Ring
C EPR O-Ring
M Gold electrical contacts for extremely low current applications
N CENELEC approval
R 72" Electrical free leads

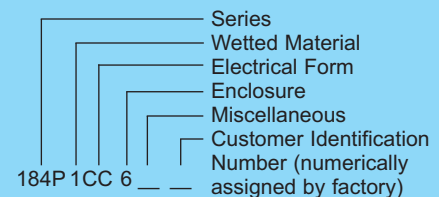
Special (Consult representative or factory)

- Pressure port per MS33649-04
- Electrical connection per MS33678-10SL-3P
- Non-catalog set point, deadband and/or proof pressure
- Operating temperature capability from -65°F to +350°F

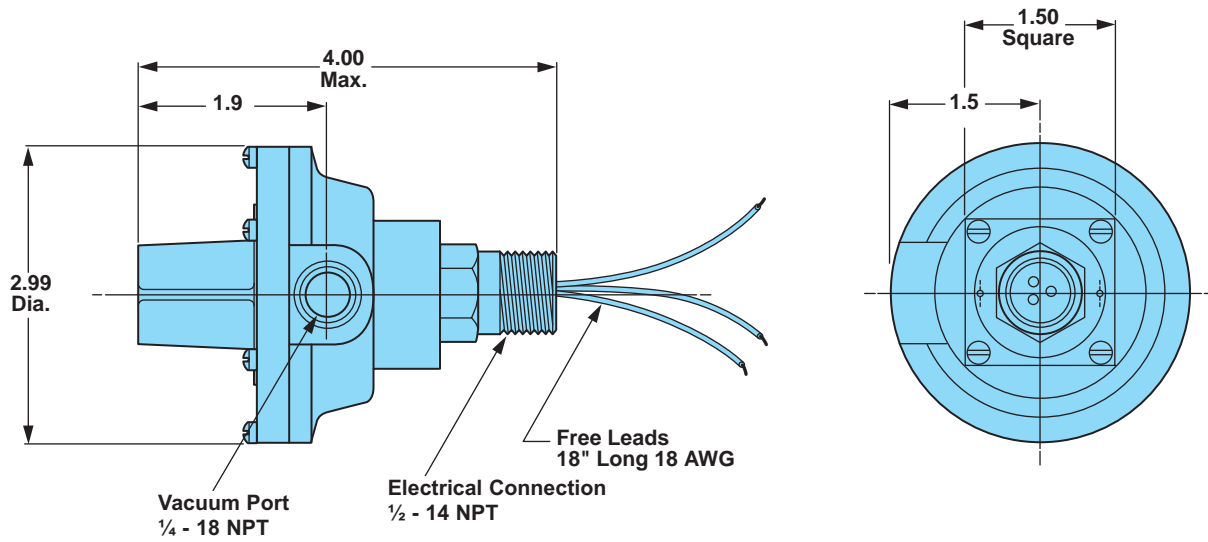
Ordering Procedure

- Specify set point, increasing or decreasing
- Specify deadband if pertinent and if not, specify as 'open'
- Specify system pressure
- Specify proof pressure
- Specify media
- Insert available option number or letter designation as required

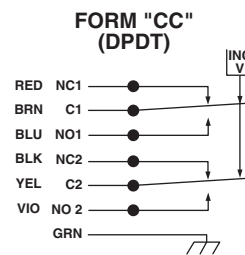
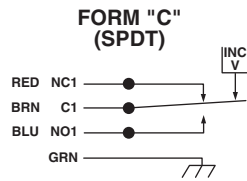
Example



Envelope Dimensions



Electrical Form



Basic Principles of Design

